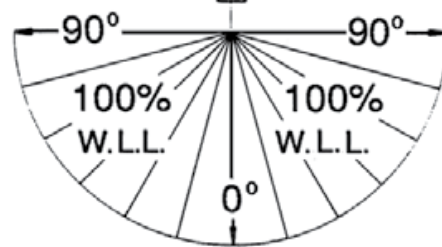
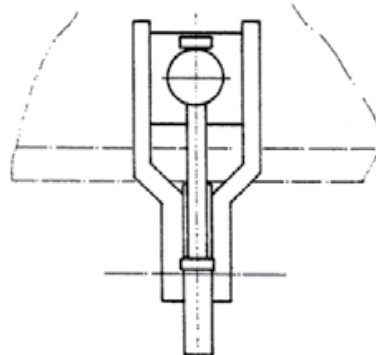
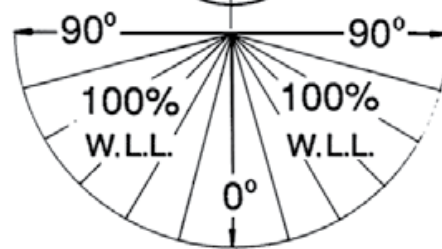
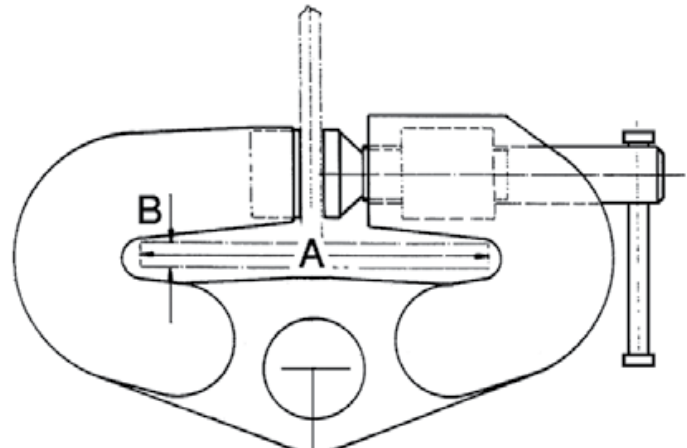


## Beam Clamps | 6,720 – 22,400 Lbs. | USC Model | Universal Superclamp Clamps

UNIVERSAL 'SUPERCLAMP' DIMENSIONS					
Model	WLL at 0° Vertical		A Adjustment Min – Max (in)	B Jaw Aperture (in)	Weight (lbs.)
	lbs.	kg			
USC3A	6,720	3,048	6 – 8	1	30
USC4	8,960	4,064	6 – 12	1	52
USC5	11,200	5,080	6 – 12	1	63
USC5A	11,200	5,080	6 – 12	1 1/2	63
USC5D	22,400	10,160	6 – 12	1	83.8
USC5D400	22,400	10,160	9 – 16	1	95

Green shading reflects rental inventory.



### Universal SUPERCLAMP