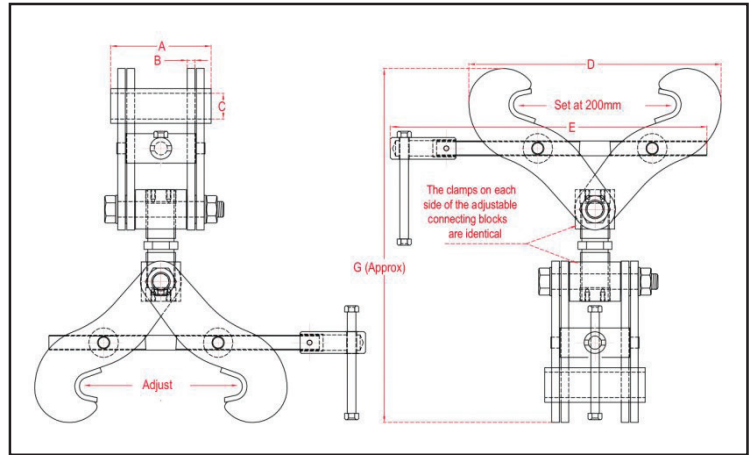
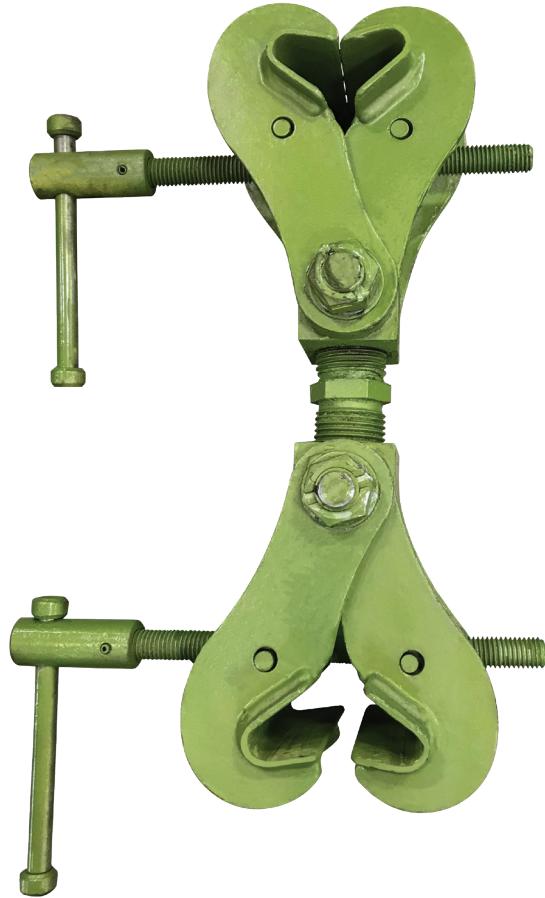


Beam Clamps | 6,720 – 8,960 Lbs. | S Model | Adjustable Double Ended/Fixed Jaw

Riley Double-Ended Clamp



ADJUSTABLE DOUBLE ENDED 'SUPERCLAMP' MONORAIL CONSTRUCTION CLAMPS										
Incorporating Stationary Height Stabilizer Block										
Model	WLL		Jaw Grip Adjustment Min-Max (in)	Dimensions						Weight (lbs.)
	lbs.	kg		A (in)	B (in)	C (in)	D (in)	E (in)	G (in)	
S7A	6,720	3,048	3 – 7.5	4.7	.24	.87	7.4	10.8	14.4	23
S8A	8,960	4,064	6 – 10	5.1	.39	.87	12.9	16	18	44

Green shading reflects rental inventory.

Riley (Lifting Equipment) Ltd

All specifications and data relating to capacity, function, performance, size, purpose, or design have been provided by the manufacturer. They have not been independently verified by LGH and LGH makes no representation or warranty as to their accuracy or completeness.

spec sheet 243
October 14, 2019 01:31 PM