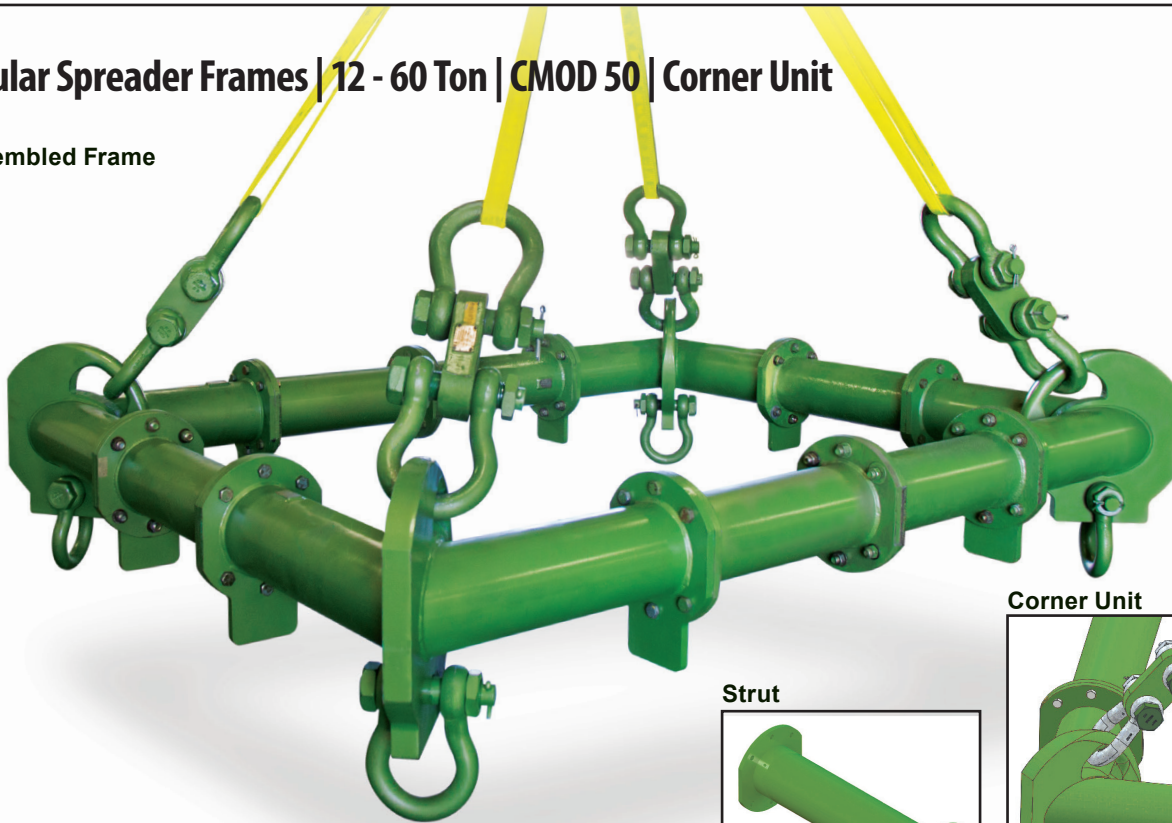
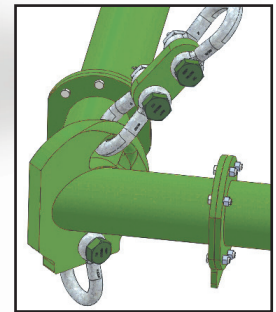
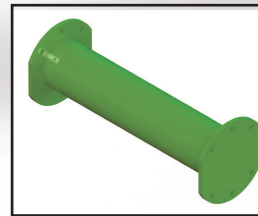
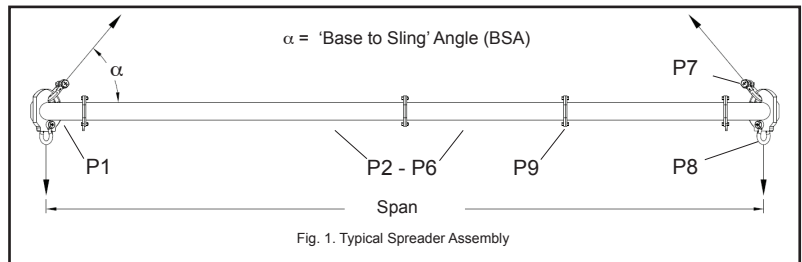


Modular Spreader Frames | 12 - 60 Ton | CMOD 50 | Corner Unit

Assembled Frame

Corner Unit

Strut

Table 1: Component List

Part	Description	Weight (lbs)
P1	Corner Unit	345
P2	12 Ft. Strut	285
P3	6 Ft. Strut	168
P4	3 Ft. Strut	109
P5	2 Ft. Strut	90
P6	1 Ft. Strut	70
P7	35T Shackle	44
P8	25T Shackle	31
P9	Bolts, Nuts And Washers	
P10	50T Drop Link	24


CMOD 50 - FRAME SPECIFICATION

Rated at a maximum of 60 tons WLL please see table 2 for WLL's at specific spans

Base to Sling Angle, α , no less than 45 degrees

Corner Units are rated at 15 tons each (60t combined capacity)

Bolt tightening torque: 110 lb•ft. Spanner size required: 1.18 inches

Recommended additional equipment: Torque Wrench, Podger Spanner and Ring Spanner

- Max number of struts allowed in assembly: 5 per side
- Assemble longer struts in the center of the configuration
- Sling angle is crucial to safe use of frame

Modular Spreader Frames | 12 - 60 Ton | CMOD 50 | Corner Unit

Load charts only to be used in conjunction with CMOD 50 User Instructions

First pick the span required for your frame (e.g. 10' x 28') and the Sling Angle (we recommend 60° BSA where possible), then check the WLL via the appropriate table. Read the table by locating the lower span on the y axis of the chart and the larger on the x. The cell which you are referred to will indicate the WLL for your chosen span. If your exact span is not noted in the table, then please round up or down to the values that will give you the lowest WLL (to ensure no overloads are applied). Please contact LGH for confirmation on your WLL if required. WLL given in tons.

CMOD 50: WLL / tonnes @ 60° BSA													
36												32	
34											38	31	
31									45	36	30		
28							54	44	34	29			
25					54	53	42	33	27				
22				60	53	51	40	32	26				
19			60	60	51	47	38	30	25				
16		60	60	56	47	45	36	29	25				
13		60	60	60	52	45	43	34	28	24			
10		60	60	60	60	50	45	42	34	27	23		
7		60	60	60	60	60	50	45	41	33	26	23	
4		60	60	60	60	60	60	50	45	41	31	26	22
Span (ft)	4	7	10	13	16	19	22	25	28	31	34	36	

CMOD 50: WLL / tonnes @ \ 45° BSA													
36												18	
34											22	18	
31									25	21	17		
28							31	24	19	16			
25					31	30	23	18	15				
22				31	30	29	22	18	14				
19			40	31	29	27	22	17	14				
16		40	40	29	27	25	21	16	13				
13		50	40	36	27	25	24	19	15	13			
10		50	50	40	36	25	25	23	19	15	12		
7		50	50	50	40	36	25	25	22	18	14	12	
4		50	50	50	50	40	36	25	25	22	18	14	12
Span (ft)	4	7	10	13	16	19	22	25	28	31	34	36	

Assembled Frame:

