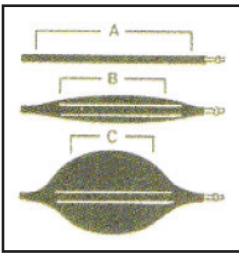


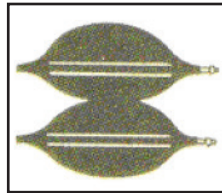
Air Bags | 3.3 – 70 Ton | Airbag Mats and Controls

1 Port Controller

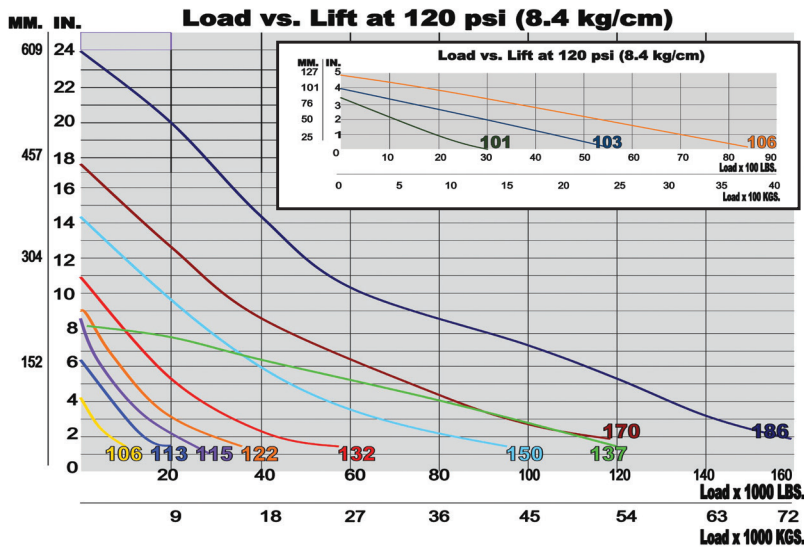
2 Port Controller

4 Port Controller


All lifting capacities mentioned in the charts are measured at the maximum effective lifting area (A). As the air bag is inflated (B), this effective area decreases (C) due to the rounded shape of the air bag. Lifting capacity also decreases (see performance chart).



Stack up two jacks together to increase effective lifting height.



Specifications

Max Lifting Cap. (Tons)	Lifting Ht. (in.)	Model (Steel)	Model (Kevlar)	Max Working Pressure (p.s.i.)	Dimensions			Weights	
					Length (in.)	Width (in.)	Collapsed Ht. (in.)	Steel (lbs.)	Kevlar (lbs.)
3.3	3.0	103k	103k	120	12	6	.75	N/A	3
13	7.5	113k	113k	120	15	15	1.25	15	11
22	10	122k	122k	120	20	20	1.25	28	22
32	12	132k	132k	120	21	25	1.25	35	28
50	15	150k	150k	120	29	29	1.25	63	45
70	18	170k	170k	120	34	34	1.25	81	60

Green shading reflects rental inventory.