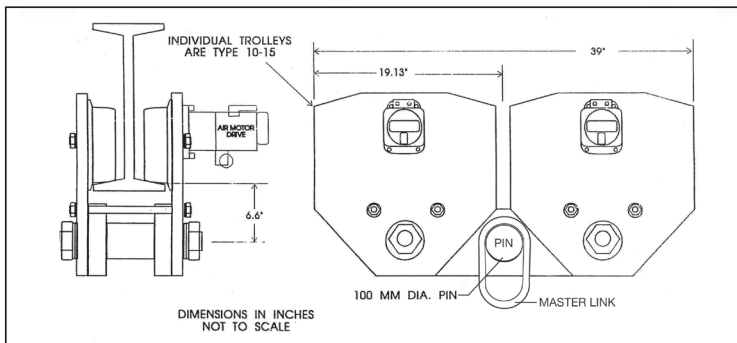


Beam Trolleys | 25 - 60 Ton | JDN Model | Push/Motorized Trolley

50 Ton Model



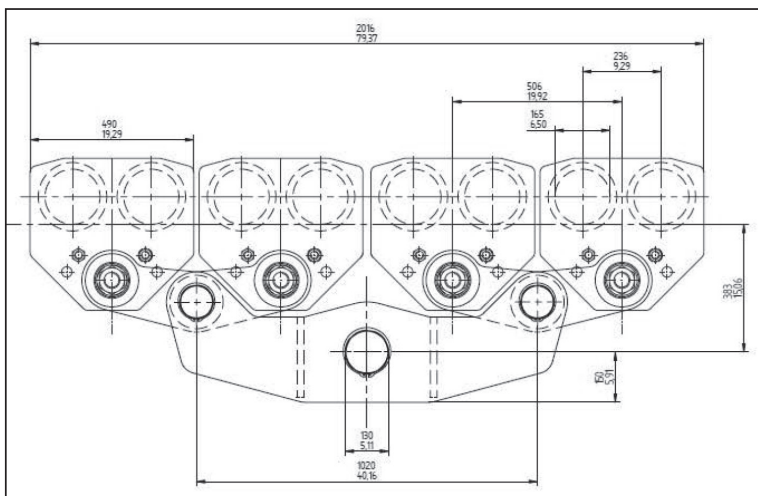
25 and 32 Ton



Note:

1. If master ring is used around load pins, this will increase the headroom dimension.
2. Trolley can be used as either push or air powered, depending on trolley arrangement.

50 Ton



Specifications

Capacity (Tons)	Flange Size (in)	Weight (lbs.)		Air Consumption (cfm)	Traveling Speed (fpm)
		Push	Air		
JDN25t	4.92 - 7.40 7.48 - 9.68 9.76 - 12.2 12.87 - 16.61*	720	755	28.35	39
JDN32t	6.7 - 7.40 7.48 - 9.68 9.76 - 12.2 12.87 - 16.61*	720	755	28.35	39
JDN50t	4.92 - 7.40 7.48 - 9.68 9.76 - 12.2 12.87 - 16.61*	2,500	2,550	28.35	39
JDN60t	4.92 - 7.40 7.48 - 9.68 9.76 - 12.2 12.87 - 16.61*	2,700	2,700	28.35	39

Green shading reflects rental inventory.