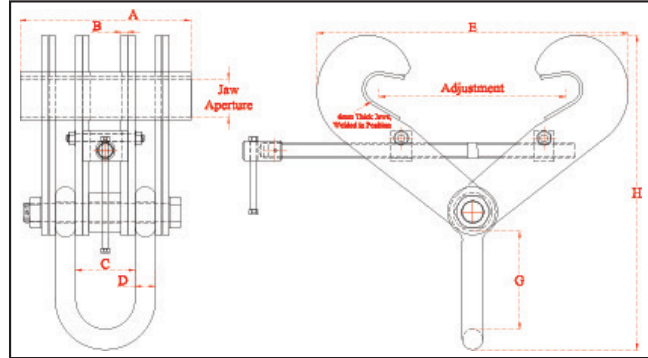


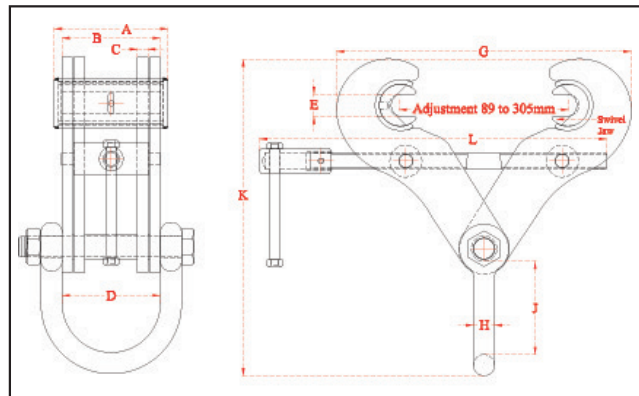
## Beam Clamps | 6,720 – 67,200 Lbs. | S Model | Fixed Jaw/Swivel Jaw

**Riley 44,800 Beam Clamp S15**


### FIXED JAW 'SUPERCLAMP' ADJUSTABLE GIRDERDOGS Incorporating Adjusting Mechanism and Lifting Shackle

Model	WLL		Jaw Grip Adjustment Min-Max (in)	Jaw Aperture (in)	Dimensions							Weight (lbs.)
	lbs.	kg			A (in)	B (in)	C (in)	D (in)	E (in)	G (in)	H (in)	
<b>S15</b>	44,800	20,320	8 – 18	2	13.2	.49	4.6	1.6	29.8	7.3	24.3	144.0
<b>S16</b>	44,800	20,320	16 – 24	2.5	13.8	.49	4.6	1.6	31.3	7.3	26.5	174.0
<b>S17</b>	56,000	25,400	8 – 18	2	13.2	.59	5.1	1.8	24	7.6	24.4	166.0
<b>S18</b>	56,000	25,400	16 – 24	2.5	13.8	.59	5.1	1.8	31.3	7.3	26.7	199.5
<b>S19</b>	67,200	30,480	8 – 18	2.5	13.8	.79	5.1	1.8	24.7	7.3	24.6	202.8
<b>S20</b>	67,200	30,480	16 – 24	3	13.8	.79	5.1	1.8	30.9	7.3	27.2	235.0

Green shading reflects rental inventory.

**Riley 11,200LB Superclamp S6**


### SWIVEL JAW 'SUPERCLAMP' ADJUSTABLE GIRDER CLAMPS Incorporating Machined Jaw, Adjusting Mechanism and Lifting Shackle

Model	WLL		Jaw Grip Adjustment Min-Max (in)	Jaw Aperture (in)	Dimensions (in.)										Weight (lbs.)
	lbs.	kg			A (in)	B (in)	C (in)	D (in)	E (in)	G (in)	H (in)	J (in)	K (in)	L (in)	
<b>S5</b>	6,720	3,048	3.5 – 12	1	5.3	3.7	.24	3.7	1	13.7	.79	4	14.1	16.1	22
<b>S5A</b>	6,720	3,048	3.5 – 12	1	5.3	4.6	.40	4.6	1	13.7	.98	4.3	14.8	16.1	31
<b>S6</b>	11,200	5,080	3.5 – 12	1	5.3	4.6	.40	4.6	1	13.7	.98	4.3	14.8	16.1	31
<b>S6A</b>	11,200	5,080	3.5 – 12	1	5.3	4.6	.49	4.6	1	13.7	.98	4.3	14.8	16.1	33
<b>S11</b>	22,400	10,160	3.5 – 12	1	5.3	4.6	.79	4.6	1	13.7	1.3	4.4	15.4	16.1	47

Green shading reflects rental inventory.

**Riley (Lifting Equipment) Ltd**

All specifications and data relating to capacity, function, performance, size, purpose, or design have been provided by the manufacturer. They have not been independently verified by LGH and LGH makes no representation or warranty as to their accuracy or completeness.

spec sheet 053  
October 03, 2023 04:33 PM