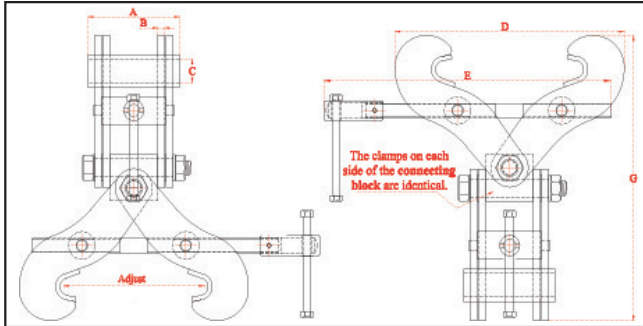
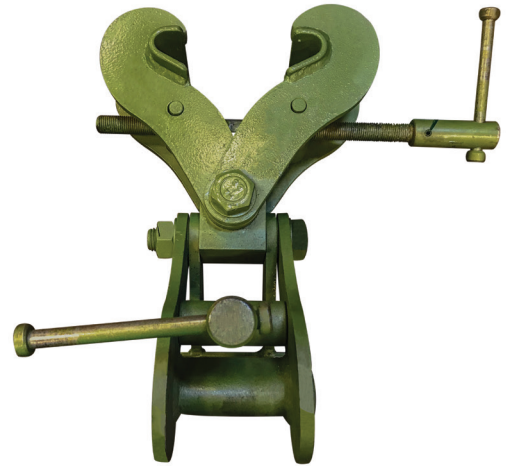


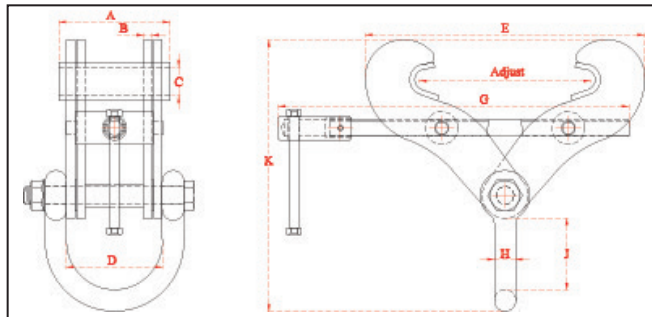
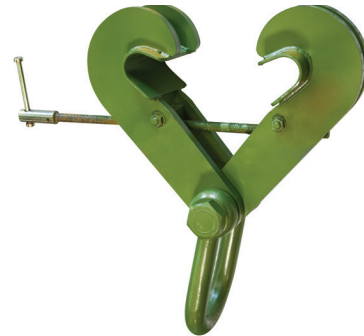
Beam Clamps | 6,720 – 33,601 Lbs. | S Model | Adjustable Double Ended/Fixed Jaw


Riley 8,960LB Double-Ended Clamp S8


ADJUSTABLE DOUBLE ENDED 'SUPERCLAMP' MONORAIL CONSTRUCTION CLAMPS Incorporating Stationary Height Stabilizer Block

Model	WLL		Jaw Grip Adjustment Min-Max (in)	Dimensions						Weight (lbs.)
	lbs.	kg		A (in)	B (in)	C (in)	D (in)	E (in)	G (in)	
S7	6,720	3,048	3 – 7.5	4.7	.24	.87	7.4	10.8	11.7	19.8
S8	8,960	4,064	6 – 10	5.1	.39	.87	12.9	16.1	15.4	40.8

Green shading reflects rental inventory.


Riley 10T Superclamp S4A


FIXED JAW 'SUPERCLAMP' ADJUSTABLE GIRDER CLAMPS Incorporating Adjusting Mechanism and Lifting Shackle

Model	WLL		Width Adjustment Min-Max (in)	Dimensions									Weight (lbs.)
	lbs.	kg		A (in)	B (in)	C (in)	D (in)	E (in)	G (in)	H (in)	J (in)	K (in)	
S1	4,480	2,032	3 – 7.5	5	.12	.87	3.5	7.4	10.8	.8	3	10	9
S2	6,720	3,048	3 – 7.5	5	.24	.87	3.5	7.4	10.8	.8	3	10	11
S2A	6,720	3,048	3 – 7.5	5.1	.5	.87	4	10	10.8	.8	4	11	18
S3	8,960	4,064	6 – 10	5.1	.4	.87	4.5	13	16	1	4	13	24.3
S3A	11,200	5,080	6 – 12	5.5	.5	1.3	4.6	14.7	16	1	4.3	14	33
S3X	11,200	5,080	3 – 7.5	5.1	.5	.87	4.6	9.3	11.6	1	4.3	11.8	22
S4A	22,400	10,160	8 – 18	5.5	.8	1.7	4.6	19.6	22	1.3	4.4	18.7	60.6
S4S	13,440	6,096	8 – 18	5.5	.5	1.7	4.6	19.6	22	1	4.3	18	42
S12	33,560	15,240	8 – 18	6.7	.8	2	4.6	24	26	1.6	7.3	24.3	109
S14	33,560	15,240	16 – 24	7	.8	2.5	4.6	31.3	32	1.6	7.3	26.5	129

Green shading reflects rental inventory.

Riley (Lifting Equipment) Ltd

All specifications and data relating to capacity, function, performance, size, purpose, or design have been provided by the manufacturer. They have not been independently verified by LGH and LGH makes no representation or warranty as to their accuracy or completeness.

spec sheet 052
September 16, 2019 02:34 PM