

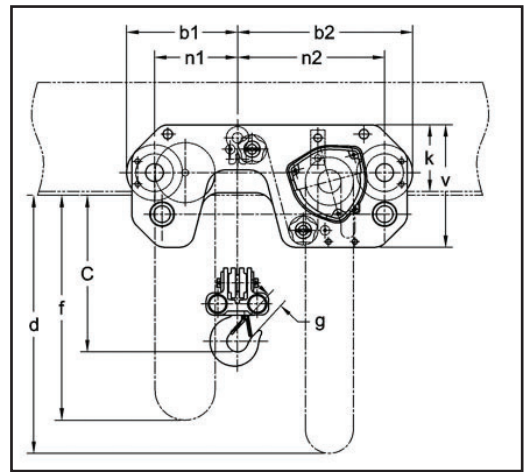
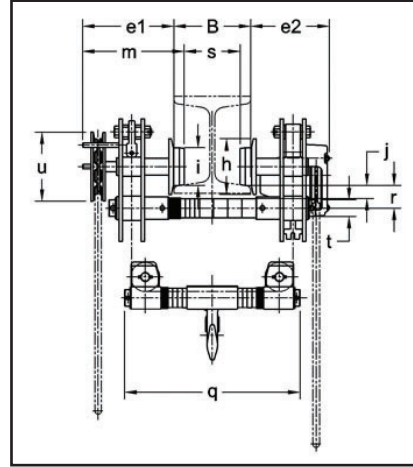


THE LIFTING EXPERTS

(800) 878-7305 www.RentLGH.com Rentals@RentLGH.com

Ultra-Low Headroom Trolley Hoist | 3– 10 Ton | SHB | Geared Trolley

Harrington SHB100



Specifications

Capacity (Tons)	Model	Headroom	Standard Lift	Pull to Lift Load (lbs)	Min Radius for Curve*	Flange Range	Load Chain Dia. (mm)	Weight (lbs.)	Weight for Additional One ft. of Lift (lbs)	Strands of Load Chain
3	SHB030	6.5"	20'	63	N/A	3.23" to 8.03"	8.0	354	3.1	2
10	SHB100	10.0"	20'	81	N/A	5.50" to 8.66"	9.0	797	6.1	4

Green shading reflects rental inventory.

*Due to wheelbase length, the SHB cannot negotiate a curved beam.

Dimensions

Capacity (Tons)	Model	b1	b2	B	C	d	e1	e2	f	g	h	i	j	k	m	n1	n2	q	r	s	t	u	v
3	SHB030	11.6"	18.3"	3.23" to 8.03"	6.5"	19.0"	9.5"	8.1"	19.0"	1.7"	5.83"	3.94"	1.3"	7.0"	10.6"	8.7"	15.4"	18.3"	2.4"	B - 2.2"	1.73"	7.20"	12.8"
10	SHB100	15.5"	23.1"	5.50" to 8.66"	10.0"	19.0"	11.4"	8.5"	19.0"	2.4"	7.29"	6.10"	1.3"	10.5"	13.2"	11.8"	19.4"	19.6"	3.3"	B - 3.5"	2.76"	8.43"	16.5"

Green shading reflects rental inventory.



All specifications and data relating to capacity, function, performance, size, purpose, or design have been provided by the manufacturer. They have not been independently verified by LGH and LGH makes no representation or warranty as to their accuracy or completeness.

spec sheet 021
October 03, 2023 11:48 AM