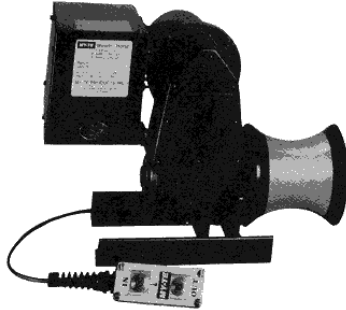




OPERATION MANUAL

(800) 878-7305 Rentals@RentLGH.com RentLGH.com



Model 300A

**1600# Double
Line Lift Capacity**



Winch and Hoist OPERATION and MAINTENANCE OF 115 Volt AC Capstan Winch-Hoist Main Parts List for 300A

READ THIS BEFORE OPERATING UNIT

INSTALLATION:

Mount on clean, flat surface. Bolt down with 4-1/2" bolts. For ease of service, we do not recommend welding frame to surface.

Unit should be plugged into a 115 Volt A.C. grounded receptacle. Use of extension cords may cause power loss at full capacity. Make sure the voltage and type of current stamped on the name plate is used. The 115 Volt units require 19 amps. service for maximum lift, and uses a manual reset circuit breaker rated at 20 amps.

For additional safety, a power disconnect may be installed to provide a means of cutting power in place of using the power cord to disconnect.

ROPE USAGE AND SAFETY:

The capstan drum winch-hoist is designed to be used with rope of 1/2" to 3/4" diameter to winch or hoist loads requiring up to 800 lbs. of single line pull. Polyester or Dacron rope makes a good rope choice due to its resistance to heat generated by drum friction. Do not use wire rope.

Wrap the rope around the drum placing the load line closest to the gear box. An alternate method of lowering a load is to operate the winch-hoist in the forward direction while paying rope back onto the drum.

The proper number of wraps is determined by feel. Feeding off and paying back of the fall line should require minimal effort. Use at least 3 wraps of rope on the drum. Heavier loads may require 4 wraps. Do not place so many wraps on the drum as to allow the rope to ride over the end of the drum. If the load requires excessive operator effort or more than 4 wraps of rope on the drum, a two part line must be used. If this does not alleviate the problem, check the weight of the load and be sure rope travel and load path are unrestricted. Do not overload the winch-hoist!

OPERATION:

These units are designed for intermittent duty operation. Mfg. recommends a 25% duty cycle. That is, for good motor life, usage of 15 minutes out of one hour is preferable.

To prevent shock loading, slowly remove slack from rope before full load is moved.

The remote control switch is a special 4 wire control which is part of the dynamic brake control system. Changing the switch to some other type will eliminate the braking action. Use only factory provided switch.

Remote switch provides forward and reverse control through a 24 volt transformer. Lifting power is the same in either direction.

MAINTENANCE:

If the unit is installed outside, be sure to provide a cover to protect motor and controls from the weather. When the unit is in operation be sure cover is completely removed.

Periodic inspection of switch and power cord should be made to detect any damage or cuts which would require replacement.

The gearbox oil is shared between the spur and worm gear housings. The factory-installed oil is a Shell product; Omala 68. It is an EP type industrial gear oil, ISO Grade 68. If this is not available, an SAE 20 weight, non-detergent motor oil is acceptable. Standard capacity is 18 ounces.

TROUBLE SHOOTING AND REMEDIES:

CAUTION: BEFORE SERVICING OR INSPECTING UNIT FOR PROBLEMS BE SURE TO DISCONNECT POWER.

If the unit does not run, check power supply. Be sure correct voltage and frequency are being used. Remove power plug and remove control box cover. Visually inspect for loose wires, stuck contacts on relays, and screws which may have worked loose.

If the unit runs but braking is not instantaneous, check resistors and motor brush condition. Bad resistors will effect the dynamic braking. Check resistors for cracked porcelain and exposed wire. Replace as needed. To check resistors electrically, test individually with a continuity test. On ohmmeter, each resistor should have a value of 4 ohms and together a resistance of 2 ohms.

Care should be taken to keep the armature in good condition which may be accomplished by lightly rubbing commutator with a rubstone.

Check brushes to see that they seat on the commutator and are not cracked or badly worn. Replace as needed. Brush springs should provide enough tension to help keep brushes seated.

If the unit does not operate properly after the above remedies, contact a qualified electrician or the factory.

WARRANTY:

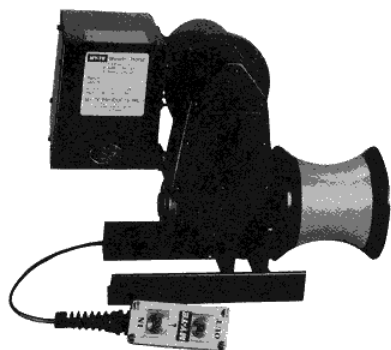
All My-te winch-hoists are designed for material handling use only. My-te Products, Inc. warrants each My-te winch-hoist to be free of defects in material and workmanship for a period of one year. This warranty does not cover abuse, neglect or use above or beyond rated capacity and duty cycle. Warranty coverage includes shipping charges, one way, by standard ground service. Warranty does not cover cost of installation or removal of winch-hoist from service or loss due to downtime or time out of service. My-te will not reimburse unauthorized warranty expense. The final responsibility for fit of winch-hoist with application rests with end user. The warranty is void if the winch-hoist is altered or parts substituted. This warranty is limited to repair or replacement at manufacturer's factory or a point designated by the manufacturer. Inspection by the manufacturer will determine manufacturer's liability.

**MY-TE WINCH-HOISTS ARE DESIGNED
FOR MATERIAL HANDLING USAGE.**

My-te Products, Inc.
9880 East 30th St., Indianapolis, IN 46229

317-897-9880
317-897-9811 (fax)

www.myte.com
sales@myte.com (E-mail)



Model 300A



Winch and Hoist

OPERATION and MAINTENANCE

OF

115 Volt AC Capstan Winch-Hoist Main Parts List for 300A

**1600# Double
Line Lift Capacity**

READ THIS BEFORE OPERATING UNIT

INSTALLATION:

Mount on clean, flat surface. Bolt down with 4-1/2" bolts. For ease of service, we do not recommend welding frame to surface.

Unit should be plugged into a 115 Volt A.C. grounded receptacle. Use of extension cords may cause power loss at full capacity. Make sure the voltage and type of current stamped on the name plate is used. The 115 Volt units require 19 amps. service for maximum lift, and uses a manual reset circuit breaker rated at 20 amps.

For additional safety, a power disconnect may be installed to provide a means of cutting power in place of using the power cord to disconnect.

ROPE USAGE AND SAFETY:

The capstan drum winch-hoist is designed to be used with rope of 1/2" to 3/4" diameter to winch or hoist loads requiring up to 800 lbs. of single line pull. Polyester or Dacron rope makes a good rope choice due to its resistance to heat generated by drum friction. Do not use wire rope.

Wrap the rope around the drum placing the load line closest to the gear box. An alternate method of lowering a load is to operate the winch-hoist in the forward direction while paying rope back onto the drum.

The proper number of wraps is determined by feel. Feeding off and paying back of the fall line should require minimal effort. Use at least 3 wraps of rope on the drum. Heavier loads may require 4 wraps. Do not place so many wraps on the drum as to allow the rope to ride over the end of the drum. If the load requires excessive operator effort or more than 4 wraps of rope on the drum, a two part line must be used. If this does not alleviate the problem, check the weight of the load and be sure rope travel and load path are unrestricted. Do not overload the winch-hoist!

OPERATION:

These units are designed for intermittent duty operation. Mfg. recommends a 25% duty cycle. That is, for good motor life, usage of 15 minutes out of one hour is preferable.

To prevent shock loading, slowly remove slack from rope before full load is moved.

The remote control switch is a special 4 wire control which is part of the dynamic brake control system. Changing the switch to some other type will eliminate the braking action. Use only factory provided switch.

Remote switch provides forward and reverse control through a 24 volt transformer. Lifting power is the same in either direction.

MAINTENANCE:

If the unit is installed outside, be sure to provide a cover to protect motor and controls from the weather. When the unit is in operation be sure cover is completely removed.

Periodic inspection of switch and power cord should be made to detect any damage or cuts which would require replacement.

The gearbox oil is shared between the spur and worm gear housings. The factory-installed oil is a Shell product; Omala 68. It is an EP type industrial gear oil, ISO Grade 68. If this is not available, an SAE 20 weight, non-detergent motor oil is acceptable. Standard capacity is 18 ounces.

TROUBLE SHOOTING AND REMEDIES:

CAUTION: BEFORE SERVICING OR INSPECTING UNIT FOR PROBLEMS BE SURE TO DISCONNECT POWER.

If the unit does not run, check power supply. Be sure correct voltage and frequency are being used. Remove power plug and remove control box cover. Visually inspect for loose wires, stuck contacts on relays, and screws which may have worked loose.

If the unit runs but braking is not instantaneous, check resistors and motor brush condition. Bad resistors will effect the dynamic braking. Check resistors for cracked porcelain and exposed wire. Replace as needed. To check resistors electrically, test individually with a continuity test. On ohmmeter, each resistor should have a value of 4 ohms and together a resistance of 2 ohms.

Care should be taken to keep the armature in good condition which may be accomplished by lightly rubbing commutator with a rubstone.

Check brushes to see that they seat on the commutator and are not cracked or badly worn. Replace as needed. Brush springs should provide enough tension to help keep brushes seated.

If the unit does not operate properly after the above remedies, contact a qualified electrician or the factory.

WARRANTY:

All My-te winch-hoists are designed for material handling use only. My-te Products, Inc. warrants each My-te winch-hoist to be free of defects in material and workmanship for a period of one year. This warranty does not cover abuse, neglect or use above or beyond rated capacity and duty cycle. Warranty coverage includes shipping charges, one way, by standard ground service. Warranty does not cover cost of installation or removal of winch-hoist from service or loss due to downtime or time out of service. My-te will not reimburse unauthorized warranty expense. The final responsibility for fit of winch-hoist with application rests with end user. The warranty is void if the winch-hoist is altered or parts substituted. This warranty is limited to repair or replacement at manufacturer's factory or a point designated by the manufacturer. Inspection by the manufacturer will determine manufacturer's liability.

**MY-TE WINCH-HOISTS ARE DESIGNED
FOR MATERIAL HANDLING USAGE.**

My-te Products, Inc.

9880 East 30th St., Indianapolis, IN 46229

317-897-9880

317-897-9811 (fax)

www.myte.com

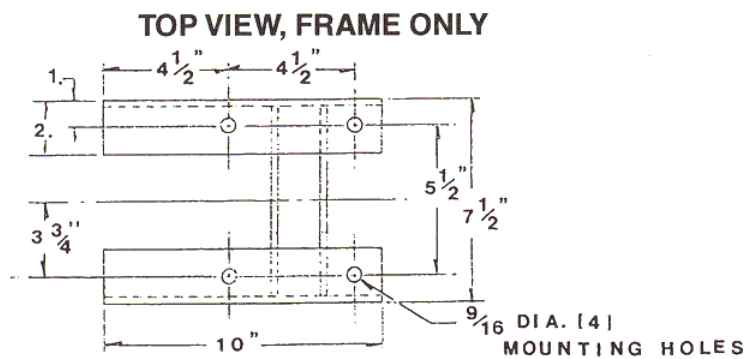
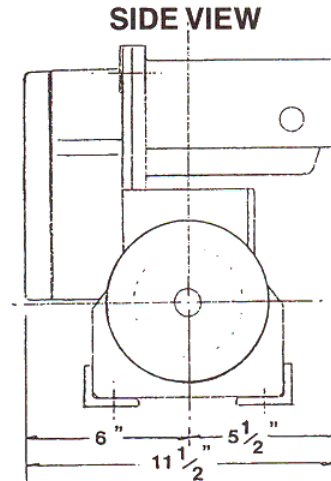
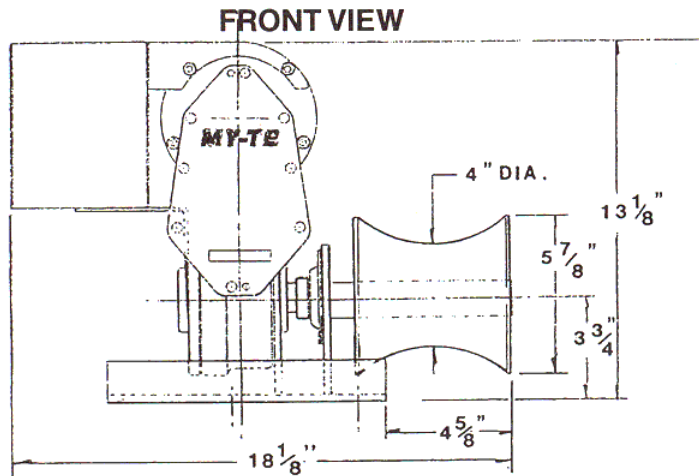
sales@myte.com (E-mail)

My-te Winch and Hoist Parts List

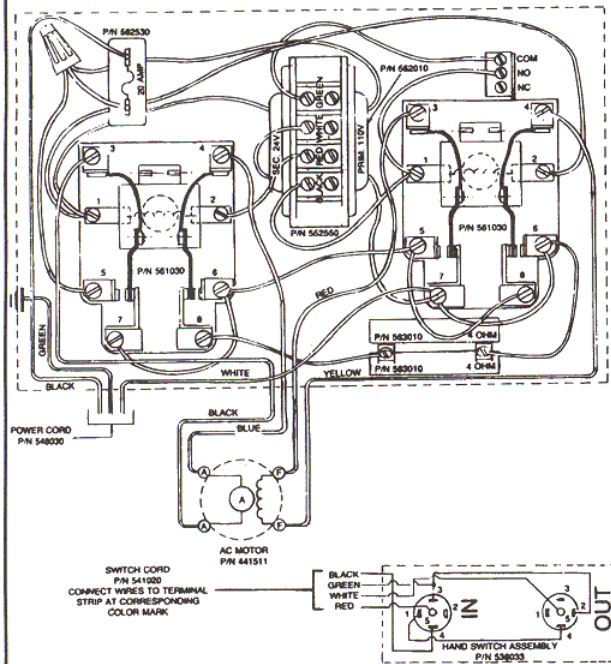
MY-TE 115 VOLT WINCH & HOIST UNITS

Ref. Part Qty.				Ref. Part Qty.				Ref. Part Qty.			
No.	No.	Used	Part Name/Description	No.	No.	Used	Part Name/Description	No.	No.	Used	Part Name/Description
1	052620	1	Main Shaft - Capstan	*	248021		Seal & Gasket Kit Assy. - 115V	76	351020	2	Key, Worm Shaft
3	058010	1	Worm Shaft Assy. w/Spacer/Pin	*	281010	4	Screw, Resistor 6-32x3/8 RHMS	77	351030	3	Key, Main Shaft
5	068080	1	Drum Assy., Capstan	*	281520	6	Screw, Relay Mtg 10-32x3/8 RHMS	78	351050	1	Key, Pinion
8	081510	1	Cap. Worm Gear Housing	*	281530	2	Screw, Brace 10-32x3/4 RHMS	80	441511	1	Motor, 115V
9	082010	1	Cover, Worm Gear Housing	*	282250	1	Screw, Solenoid Mtg. 1/4-20x1/2	*	448020	1	Armature Assy., 115V
10	088160	1	Cover, Spur Gear Hsg. w/Bearing	47	282750	1	Set Screw, Pinion 10 x 3/8 SSS	*	448030	1	Brush Set, Motor 115V
12	088170	1	Housing, Spur Gear, w/Bearing	48	282770	3	Set Screw, Drum 5/16-18 SSS	85	512020	1	Panel, Plain
13	088090	1	Housing, Worm Gear, w/Studs	49	283020	4	Screw, Spur/WGH, 5/16-18x1 SHCS	87	518010	1	Ctrl. Box Assy. w. Brkt./Pln.Pnl.
14	112010	1	Spur Gear	52	283080	8	Screw, Cover 1/4-20 SHCS (11/4" Lg)	86	518281		Panel Assy. w/Comp. & Brace-2w
15	113010	1	Worm	53	283770	14	Screw, Wrn Gr Hsg 1/4 x 7/8 HHCS	88	518521	1	Comp. Ctrl. Box w/Sw. & Pwr. Crd.-H
16	118040	1	Idle Gear Assy. w/Shaft	54	283790	4	Screw, Mtr Mtg 1/4-20x11/4 HHCS	*	518561		Comp. Ctrl. Box w/Sw. & Pwr. Crd-Fc
17	118110	1	Pinion Assy. w/S.S.	55	284020	3	Screw, Frame/Flg 5/16x3/4 HHCS	92	531140	2	Switch, Push Button (Hand Switch)
18	118160	1	Worm Gear Assy. w/S.S.	*	285750	3	Stud, W.G.H. 3/8-16x11/4	95	538033	1	Hand Sw. Assy., 4W w/ Term.
20	082150	1	Cover, Motor-Metal	57	286250	2	Oil Plug 1/8 NPT	97	548030	1	Power Cord Assy. 14/3 w/ Term.
21	148051	1	Frame Assy., Capstan	58	286260	1	Valve, Oil Plug 1/8 NPT	*	551060	8	Terminal, Push-on "Y"
24	171280	1	Spacer, Worm Gear Hsg-Thick	*	286510	4	Nut, Resistor/Brace 6-32 Hex	*	551080	1	Terminal, Female Push-on 1/4"
25	171310	1	Spacer, Worm Gear Hsg-Thin	*	286530	8	Nut, Solenoid Term.-Small 10-32	101	552020	1	Strain Relief, Motor Wires
26	182032	1	Brace, Control Box	*	286540	4	Nut, Solenoid mtg 1/4-20 Hex	103	552040	2	Strain Relief, Cord & Switch
27	211010	2	Bearing Main Shaft	62	286550	3	Nut, Flangette 5/16-18 Hex	*	552540	1	Cable Tie, 4 1/2"
28	211060	2	Needle Bearing	63	286590	3	Nut, W.G.H. 3/8-16 Hex	106	561030	1	Relay, Power DPDT 24 VAC Coil
30	212010	2	Thrust Washer	64	286760	4	Washer, Flat-Cap & Cover	107	562011		Transformer, 115/24 VAC w/Term
31	218010	1	Bearing Assy., Flangette	*	287030	13	Lockwasher, Int.Str. #10	110	562530	1	Circuit Breaker, 20 Amp 115V
32	218020	2	Bearing Assy., Worm Shaft	66	287041	8	Lockwasher, 1/4", Hi-Collar	111	568040	2	Resistor, Assy 4 Ohm 25W
33	241010	2	Oil Seal, Main Shaft	67	287040	10	Lockwasher, Split 1/4"	*	621020	1	Decal, Oil Level
34	241020	1	Oil Seal, Motor Shaft	*	287050	4	Lockwasher, Solenoid Mtg.Int. 1/4	*	621130	1	Decal, Circuit Breaker
36	241510	1	Gasket, Worm Gear Housing	68	287060	3	Lockwasher, Flangette 5/16	*	621250	1	Decal, Drum Warning
37	241521	1	Gasket, Spur Gear Hsg.	69	287070	3	Lockwasher, W.G.H. 3/8	*	621260	1	Decal, Capacity & Serial Number
38	241530	2	Gasket, End Cap 1/32	70	311271	2	Spring Pin, Spur Gear Hsg., 11/2" Lg.	*	621270	1	Decal, Safety
*	241540	2	Gasket, End Cap.010	71	311280	1	Spring Pin, Worm Spacer	112	561031	1	Relay, Power DPDT 24 VAC Coil
*	241550	1	Gasket, Switch Housing	74	321520	2	Snap Ring, Worm Shaft	113	538060	1	Foot Switch Assy.
				75	321530	4	Snap Ring, Worm Gear Hsg.	114	568030	1	Relay Assy.
								115	538063	1	Foot Switch Relay Pkg.

MINIMUM ORDER - \$10.00



115V HAND SWITCH WIRING DIAGRAM



OPTIONAL 115V FOOT SWITCH WIRING SCHEMATIC

