



OPERATION MANUAL

(800) 878-7305 Rentals@RentLGH.com RentLGH.com



The Caldwell Group, Inc.

4080 Logistics Parkway (815) 229-5667
Rockford, IL 61109 Toll Free (800) 628-4263
www.caldwellinc.com Fax (815) 229-5686

INSTRUCTION MANUAL FOR Model 32 – Adjustable Spreader Beam

Your new Model 32-Adjustable Spreader Beam only supports loads up to its rated capacity when loaded correctly. The Model 32 is a load supporting lifter with an ASME B30.20 BTH-1 Design Category B and Service Class 2, which is for specific tasks withstanding forces based on the unit's rated capacity. Before lifting the load, attach the two-leg bridle sling (top rigging) to the Model 32. The function of the beam is to secure the legs of the top rigging and support the load while lifting the load at the fixed beam spread. Use the following guidelines for your protection and for optimal operation of your equipment. The safety precaution list is not all-inclusive. The owner or user is responsible for understanding and acting according to industry standards and any local, city, state, and federal regulations. Refer to the Manufacturer's Instruction Manual for product and safety information on other attachments, components, or both used with your lifting equipment

1. **DO NOT EXCEED RATED CAPACITY.**
2. **DO NOT** lift or support people.
3. **DO NOT** lift over people.
4. **DO NOT** lift higher than necessary.
5. **DO NOT** leave suspended load unattended.
6. **DO** inspect the lifter for damage or excess wear before each use. Check for structural bending and cracks, excess wear at load points and pins, cracked or broken welds, deformed hardware. If inspection reveals any defect(s), remove the lifting device from service, and tag "Out of Service". Immediately notify your Safety administrator or Supervisor to contact The Caldwell Group regarding any defect.
7. **DO** contact The Caldwell Group to replace damaged tags and/or decals.

Loading Operation

1. **DO NOT attach the crane hook directly to the Model 32-Adjustable Spreader Beam and lift a load.**
2. **See Tag & Decal Location page 5;** Know the rated capacity of the beam and the beam weight (located on the Caldwell Nameplate/ID tag).
3. **See page 4;** Select the top rigging:
 - A. select according to crane hook size and type of top rigging (wire rope or alloy chain)
 - B. add the rated capacity of the beam and the weight of the beam.
 - C. Select a two-leg bridle sling with a rated capacity that is equal to or greater than the total of the beam's rated capacity, plus the weight of the beam.
4. **See Figure 1;** Attach each leg of the two-leg bridle sling (top rigging) to each bail of the Model 32.
5. Top rigging minimum angle is 45°. Angles less than 45° overload your spreader system.

The Model 32 top rigging minimum angle of 45° is the design calculation at maximum spread.

6. **See Figure 1;** Calculate the required sling span for the load.
7. **See Figure 1;** Adjust the spreader beam for the required sling span:
 - A. Remove the Faspin w/Lanyard.
 - B. Adjust the spreader beam length by sliding the Inner Tube Beam **in** or **out** of the Outer Tube Beam.
 - C. Line up the Faspin holes on the Inner Tube Beam with the Faspin holes on the Outer Tube Beam.
 - D. Insert the Faspin w/lanyard through the Faspin hole for the required sling span.

DO NOT fasten the Inner Tube Beam and Outer Tube Beam together when the unpainted end is visible.

See Figure 3 and 4.



The Caldwell Group, Inc.

4080 Logistics Parkway (815) 229-5667
Rockford, IL 61109 Toll Free (800) 628-4263
www.caldwellinc.com Fax (815) 229-5686

INSTRUCTION MANUAL FOR Model 32 – Adjustable Spreader Beam

Loading Operation

8. **See Figure 1;** Use **ONLY** symmetrical attachment loading! Attach the load to each of the fixed swivel hooks with latches on the beam, and position the attachment at equal distances from the center of the bail to the center of the Swivel hook.
9. **See Figure 1;** Prevent tilting of the Model 32 Lifting Beam and the load by positioning the load's center of gravity in-line with the center of the crane hook.
10. Perform a test lift of several inches to verify the load is properly balanced and the lifter is level/horizontal.
11. **See Figure 1;** the Lifting Beam is level/horizontal, the unpainted End of the Inner Tube Beam is not visible, the attachment is symmetrical, and the top rigging is at a minimum of 45°, the load's center of gravity is in-line with the center of the crane hook, proper lifting.
12. **See Figure 2 and 4;** The Lifting Beam is not level/horizontal, the load's center of gravity is not in-line with the center of the crane hook, and the unpainted End is visible, improper lifting.

PROPER LIFTING

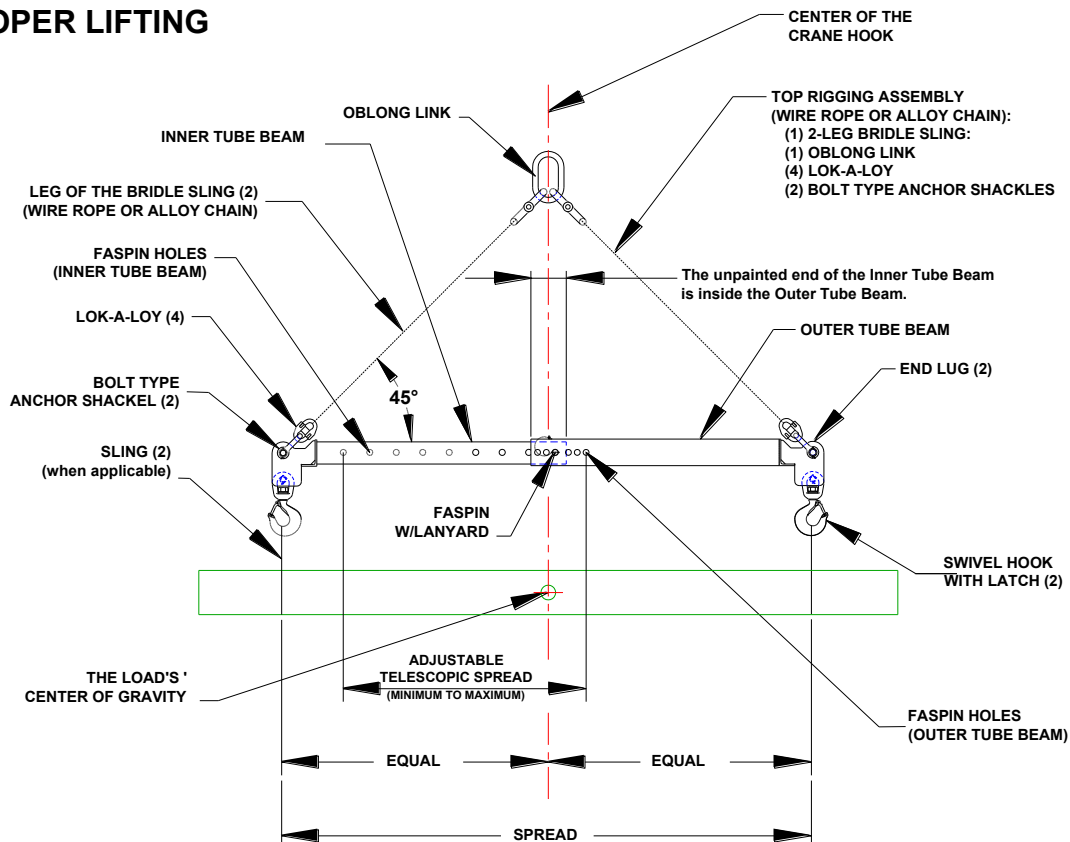
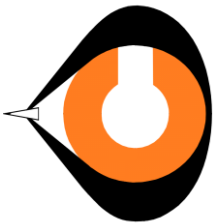


Figure 1



The Caldwell Group, Inc.
 4080 Logistics Parkway (815) 229-5667
 Rockford, IL 61109 Toll Free (800) 628-4263
www.caldwellinc.com Fax (815) 229-5686

INSTRUCTION MANUAL FOR Model 32 – Adjustable Spreader Beam

IMPROPER LIFTING

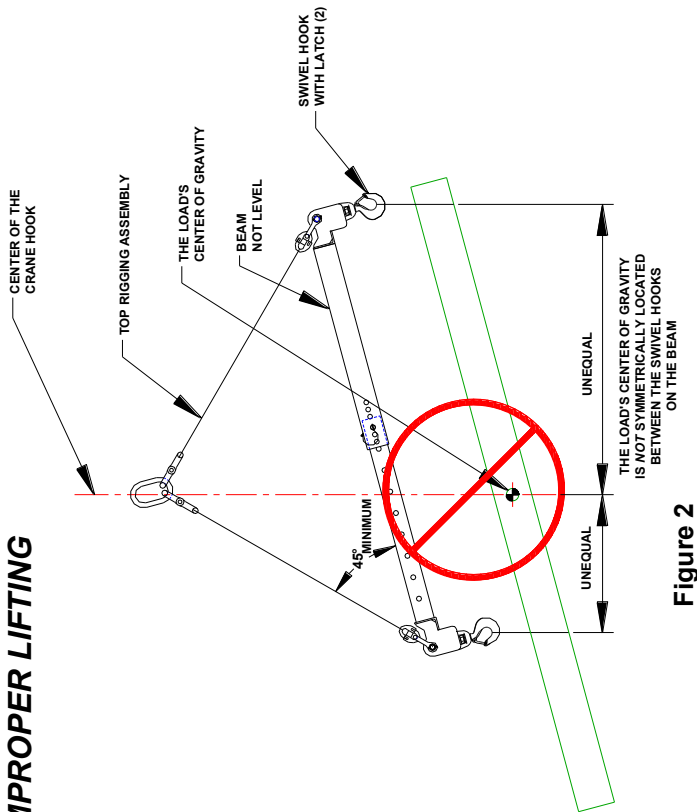


Figure 2

Figure 3

IMPROPER LIFTING

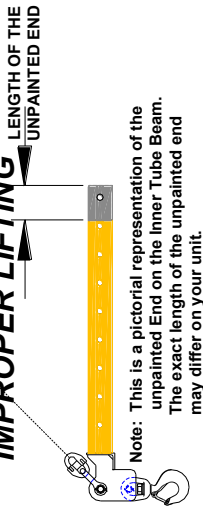
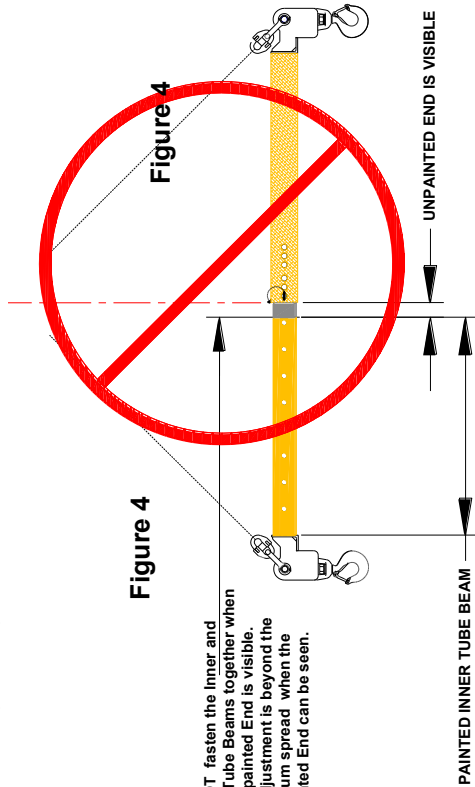


Figure 4

DO NOT fasten the Inner and Outer Tube Beams together when the unpainted End is visible. The adjustment is beyond the maximum spread when the unpainted End can be seen.



MODIFICATIONS TO YOUR LIFTING EQUIPMENT WITHOUT PRIOR WRITTEN APPROVAL FROM
 THE CALDWELL GROUP, INC. VOIDS YOUR WARRANTY.
 REFER TO ASME B30.20, REGARDING LIABILITY OF REPAIRED OR MODIFIED LIFTERS



The Caldwell Group, Inc.

4080 Logistics Parkway (815) 229-5667
 Rockford, IL 61109 Toll Free (800) 628-4263
www.caldwellinc.com Fax (815) 229-5686

INSTRUCTION MANUAL FOR Model 32 – Adjustable Spreader Beam

Top rigging component configuration depends on the crane hook size and type of top rigging used. The top rigging components will need to be sized to a rated capacity equal to or greater than the capacity of the Grade 80 alloy chain, 6X19 or 6X37 Extra Improved Plow with Independent Wire Rope Core. If there are questions on proper sizing of rigging components, contact The Caldwell Group or your rigging supplier.

PROPER RIGGING

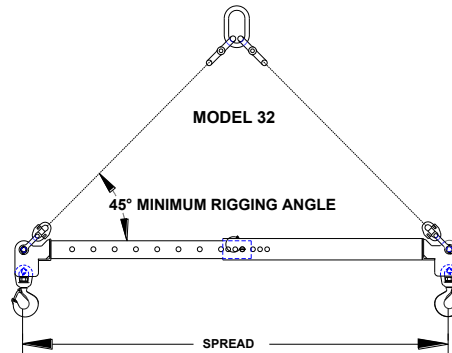


Figure 5

Rated Capacity for 6 X 19 Extra Improved Plow with Independent Wire Rope Core											
Wire Rope Sling Diameter	1/4"	5/16"	3/8"	7/16"	1/2"	9/16"	5/8"	3/4"	7/8"	1"	1-1/8"
Rated Capacity at 45° Rigging Angle	1,800 lbs.	2,800 lbs.	4,000 lbs.	5,400 lbs.	7,200 lbs.	9,000 lbs.	11,000 lbs.	15,800 lbs.	22,000 lbs.	28,000 lbs.	34,000 lbs.

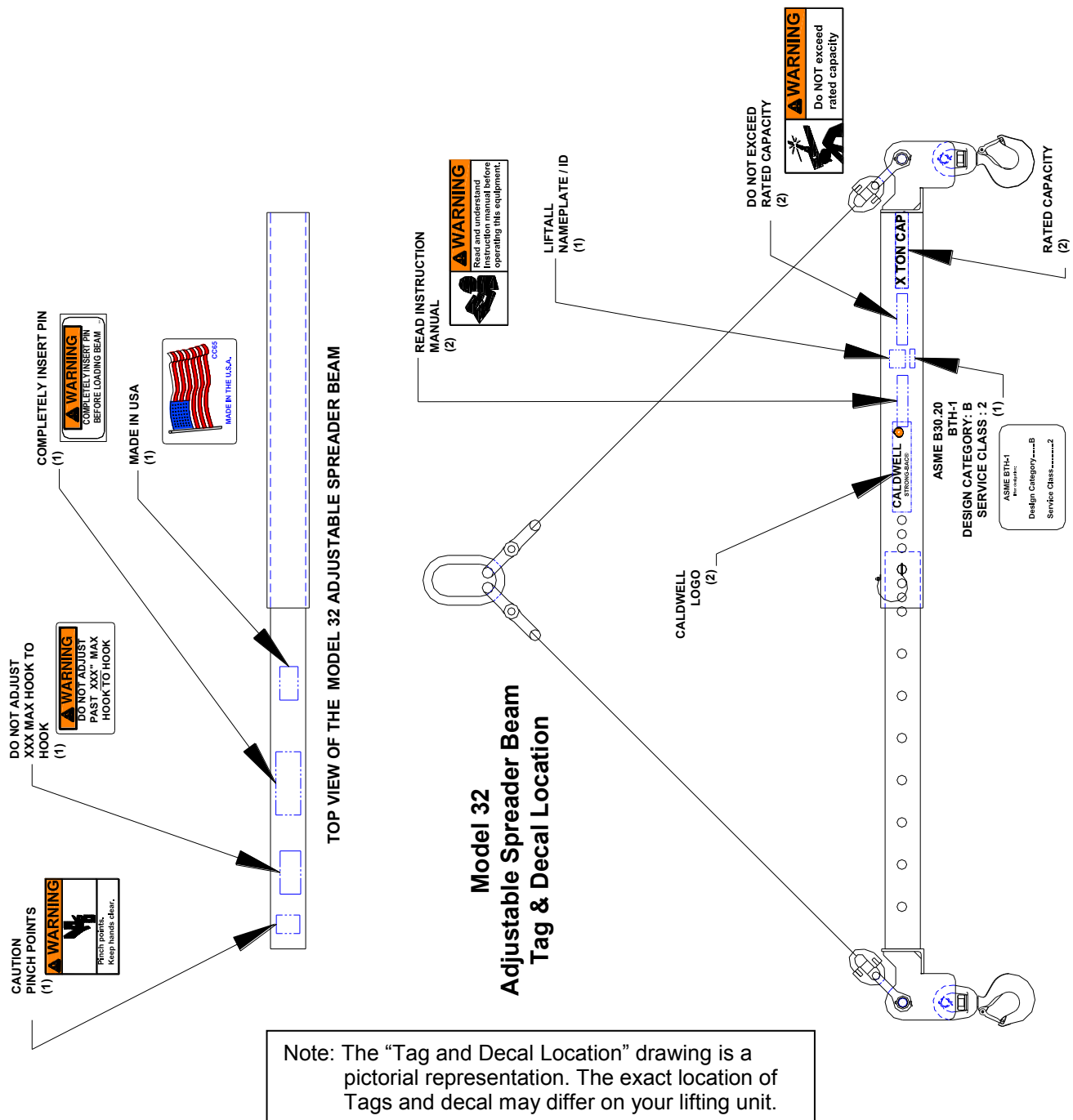
Rated Capacity for 6 X 37 Extra Improved Plow with Independent Wire Rope Core			
Wire Rope Sling Diameter	1-1/4"	1-3/8"	1-1/2"
Rated Capacity at 45° Rigging Angle	42,000 lbs.	50,000 lbs.	60,000 lbs.

Rated Capacity for Grade 80 Alloy Chain									
Grade 80 Alloy Chain Size	7/32"	9/32"	3/8"	1/2"	5/8"	3/4"	7/8"	1"	1-1/4"
Rated Capacity at 45° Rigging Angle	3,000 lbs.	4,900 lbs.	10,000 lbs.	17,000 lbs.	25,600 lbs.	40,000 lbs.	48,400 lbs.	67,400 lbs.	102,200 lbs.



The Caldwell Group, Inc.

4080 Logistics Parkway (815) 229-5667
 Rockford, IL 61109 Toll Free (800) 628-4263
www.caldwellinc.com Fax (815) 229-5686



If the identification tag or product safety tags are damaged or missing, contact The Caldwell Group for complimentary replacements.